



DOUGLAS COLLEGE

# Enrollment Status

Fall 2021



# Thanks for joining!

- The presentation will be recorded (except Q&A portion).
- The recording and PowerPoint slides will be available on our workshop page.
- You are muted, and the chat is disabled during the presentation.
- You can ask questions during the Q&A time at the end.

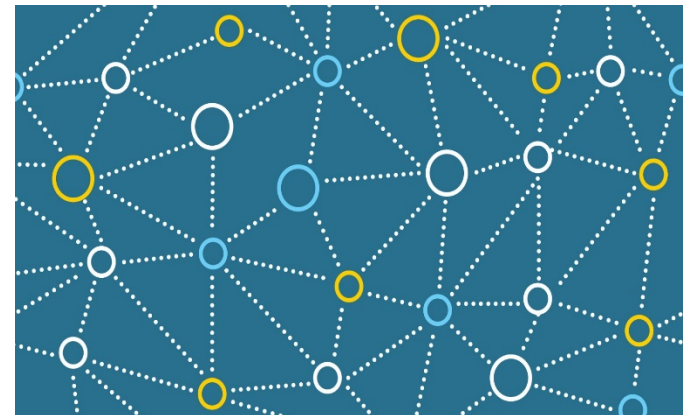
## International Student Advising Specialist (ISASs)

- We can advise on concerns/questions around Study Permit (i.e work eligibility, study permit extension, spousal work permit, Post-graduation work permit...)
- We are not able to advise on your PR options

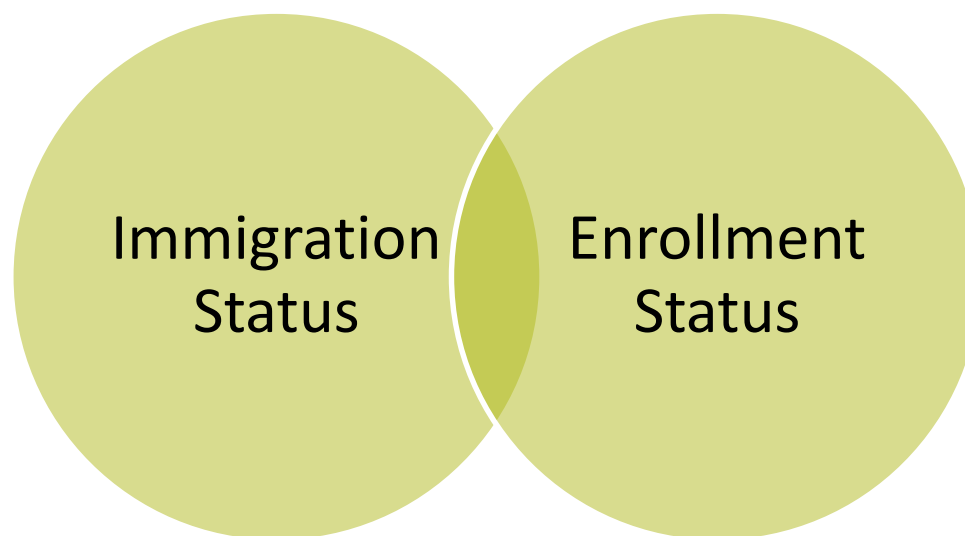
## The information in this workshop may change in the future!

- This workshop is for current Douglas students.
- This is not a legal document. **Information is subject to change at any time.**
- **Always** refer to Immigration, Refugees and Citizenship Canada for the most up-to-date information.

- Enrollment status & Immigration status
- Direct or indirect impact of factors
  - Academic semester
  - Full-time vs Part-time status
  - Working
  - Breaks and leaves
  - Program of study
  - Grades
- References and links



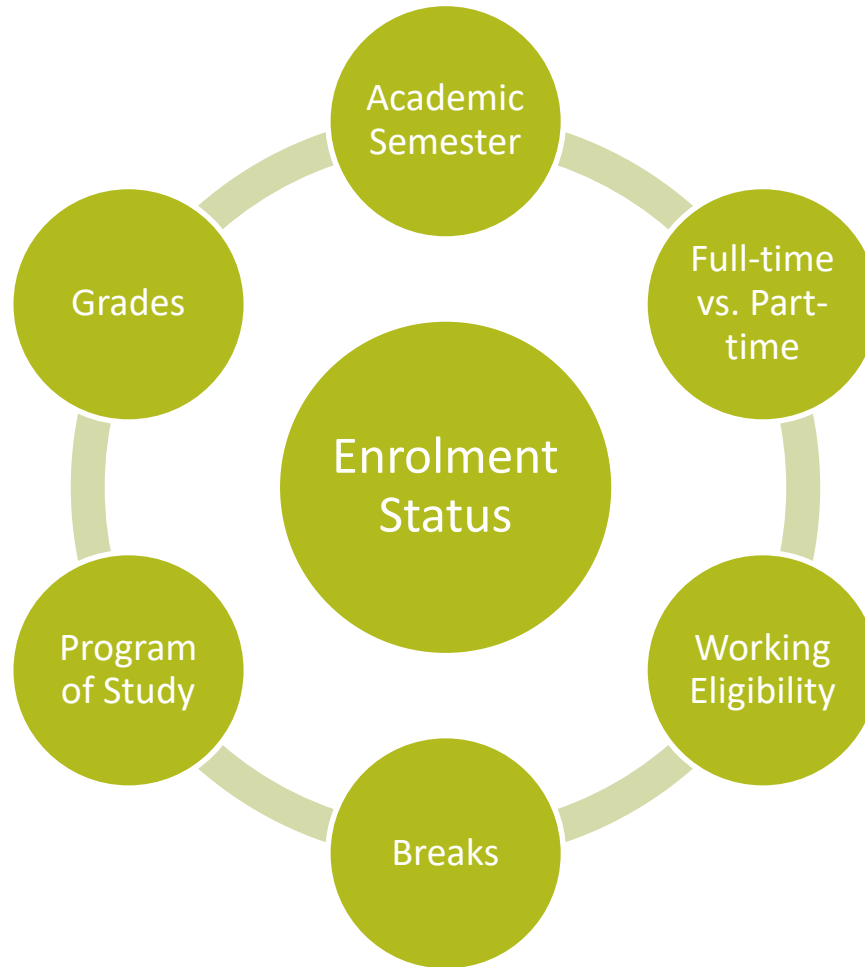
## Immigration Status & Enrollment Status



**They are not the same, but they are closely related to each other. It is your responsibility to learn and apply the rules to your specific situation.**

# Enrollment Status as a Douglas College student

## Factors to consider:



## General guideline

1. Study permit holder must actively pursue studies
2. Enroll in each academic semester (except scheduled breaks)
3. Definition of “full-time” is set by each institution
4. Must be enrolled full-time to work on/off campus in Canada
5. Successful completion of the program in the assigned program duration



1. Study permit holder must actively pursue of studies
2. Enroll in each academic semester (except scheduled breaks)

## Your study permit conditions

As a study permit holder, there are a number of conditions you need to meet. If you don't meet these conditions, you may lose your student status and study permit. You may also have to leave Canada.

As a study permit holder, you must:

- be enrolled at a [designated learning institution](#) (DLI)
- show you're actively pursuing your studies by:
  - being enrolled full-time or part-time during each academic semester (excluding regularly scheduled breaks)
  - making progress towards completing your program's courses, **and**
  - not taking [authorized leaves longer than 150 days](#) from your study program
- tell us any time you [change post-secondary schools](#)
- end your studies if you no longer meet the requirements of being a student, **and**
- leave Canada when your permit expires

Cited from: <https://www.canada.ca/en/immigration-refugees-citizenship/services/study-canada/study-permit/prepare-arrival/study-permit-conditions.html>

## 3. Definition of Full-time is set by each institution

→ **Douglas College has its own definition**

- Full-time enrollment means **registering AND completing a minimum of 9 credits per academic semester**
  - If you started a semester with 9 or more credits but...
    - end up reducing your course load to less than 9 credits by dropping or withdrawal course(s), or
    - receiving certain final grades,
- You will NOT have a full-time status. You become a part-time student

Full definition on our Enrollment page: <https://www.douglascollege.ca/international-students/current-international-students/enrollment-status>

## Part-time course load – How would it affect you?

- If you end up being enrolled in less than 9 credits, you will be considered as a part-time student for that semester.
- Your academic activities and standing will be reflected on your records and transcripts and cannot be fixed!
- Students must have full-time status in order to work on or off campus.
- Your Post-Graduation Work Permit might get affected.

Your enrollment status determines your working eligibility

- Work On/Off-Campus
- Work after graduation
- Gap in studies
- Scheduled Breaks

## 4. Must be enrolled full-time to work on/off campus

- Full time enrollment is usually required to work.
- Part-time students are not permitted to work [on-campus](#) or [off-campus](#).
- There are some exceptions to this rule.

→ For more info, please join the Working eligibility workshop

## Work after graduation

- In order to be eligible to work after graduation, you must maintain a **full-time status** in every semester and meet all other [post-graduation work permit](#) eligibility requirements.
- If you are not sure of the definition of full-time, you can make yourself ineligible for a PGWP without knowing.

→ For more info, please join the PGWP Basics workshop

## Authorized /Unauthorized leave

- Douglas College DOES NOT have an authorized leave system. This means if you take a break from your studies during your academic semester, you will be on an unauthorized leave.
- While you are away from studies, you do not meet the requirements to work.
- The gap can affect your PGWP eligibility too.

IRCC website: <https://www.canada.ca/en/immigration-refugees-citizenship/corporate/publications-manuals/operational-bulletins-manuals/temporary-residents/study-permits/assessing-conditions.html#campus>

## If you are not studying...

- Any time away from program of studies should not exceed 150 days from the date.
- If the student does not resume studies within 150 days they should either change their status to visitor or leave Canada.

A student on leave who begins or resumes their studies **within 150 days from the date the leave commenced** (that is, the date the leave was granted by the institution) is considered to be actively pursuing studies during their leave. If a student does not resume their studies **within 150 days**, they should do either of the following:

- change their status (that is, change to visitor status or worker status)
- leave Canada

If they do not change their status or leave Canada, they are considered non-compliant with their study permit conditions.

Cited from: <https://www.canada.ca/en/immigration-refugees-citizenship/corporate/publications-manuals/operational-bulletins-manuals/temporary-residents/study-permits/assessing-conditions.html#leave>



# Scheduled Breaks – Important!!

- Each institution can define “scheduled break”.
- Regularly scheduled break, must be part of the educational institution’s academic calendar (for instance, **winter and summer holidays, Reading Week**).
- At Douglas College, “scheduled breaks” are defined as:
  - **Summer semesters**, unless Summer is your first or last semester.
  - The **time between semesters** from the day **AFTER the exam period** until the first day of class of the next semester. Students are required to enroll in the semesters before and after the scheduled break.

For the full definition, go to our Enrollment page: <https://www.douglascollege.ca/international-students/current-international-students/enrollment-status>

# Scheduled Breaks – Important!!

- **Your program must also be eligible for a summer break!**
- PDD and Certificate programs are NOT eligible for summer break.
- If you are in PDD/Certificate, you are expected studying in Summer.
- If you are unsure, check your program requirements and the chart provided on the website at this link:  
<https://www.douglascollege.ca/international-students/current-international-students/working-international-student>

- Your first or last semester is not a scheduled break.
- If you are starting your program in the Fall 2021, the possible Summer break for you is Summer 2022.
- To work full-time during scheduled break, you must be a full-time student **both before and after the break.**
- If you are taking a Summer off, make sure to plan your courses ahead. Some courses are not offered every semester → Join course planning workshop

## 2 PDD back-to-back

- All PDD and Certificate programs do not have a scheduled break during Summer.
- However, if you are completing 2 PDDs, you may have a break in-between 2 programs.
  - Planning for 2<sup>nd</sup> PDD and Applying for the 2<sup>nd</sup> PDD on time is important.
  - If the timing does not work out, you are not eligible for a break.
  - Plan your courses ahead. Check which PDD you want to pursue later
  - It is a good idea NOT to mix courses for 2PDDs – finish 1<sup>st</sup> PDD then move onto 2<sup>nd</sup> PDD so your record is clear
  - **Join PBD/PDD course planning workshop on Nov. 1<sup>st</sup>**

- **Your grades can affect your enrollment status.**
- If a student receives a **W, UN, UNW, FD, or AUD**, the course will NOT count towards the full-time course load.
- You may think you were full-time, but these final grades will reduce the number of your credits.

# What those grades mean?

Grade	Numerical Value	Achievement Level	Description & Notes
A+	4.33	95% and above	<b>Outstanding Achievement</b>
A	4.00	90% to 94%	
A-	3.67	85% to 89%	
B+	3.33	80% to 84%	<b>Good Achievement</b>
B	3.00	75% to 79%	
B-	2.67	70% to 74%	
C+	2.33	65% to 69%	<b>Satisfactory Achievement</b>
C	2.00	60% to 64%	
C-	1.67	55% to 59%	
P	1.00	50% to 54%	<b>Marginal Achievement</b> Student may not use the course as a prerequisite for another course.
F	0.00	49% and below	<b>Unsatisfactory Achievement</b>
<b>UN</b>	<b>0.00</b>		<b>Unofficial Withdrawal</b> Student completed less than 70% of the total evaluation of the course, or missed more than 30% of the classes where the Instructor's Course Outline specifies that attendance is a course requirement.

# What those grades mean?

## Grades

<b>UNW</b>	Not calculated in GPA	<b>Unofficial Withdrawal</b> Student completed less than 70% of the total evaluation of the course, or missed more than 30% of the classes where the Instructor's Course Outline specifies that attendance is a course requirement.
<b>AUD</b>	Not calculated in GPA	<b>Audit</b> Student attended and met requirements as per Audit Contract. The grade has no numerical equivalent and is not included in the <b>GPA</b> .
<b>FD</b>	0.00	<b>Failure due to academic dishonesty</b> Student has breached the standards of academic integrity as laid out in the Academic Integrity Policy. This notation will remain on the student's transcript for two years following the student's graduation or last semester attended, at which time the student will become eligible to apply to have the grade converted to an "F". See Academic Integrity Policy
<b>W</b>	Not calculated in GPA	<b>Withdrawal before the official deadline</b>

## Some examples

- ACCT 1110 (3) → A-
- BUSN 1210 (3) → B
- ECON 1101 (3) → **W**
- Started as FT but became PT because of the “W” (GPA not affected)
  
- MARK 1120 (3) → A-
- CSIS 1190 (3) → B
- CMNS 1115 (3) → **F**
- Started as FT and completed as FT. The “F” is not one of the grades that affect the enrollment status (GPA affected)
  
- BIOL 1110 (5) → A-
- MATU 0411 (4.5) → B
- PHIL 1101 (3) → **UN**
- Started as FT and completed as FT. The “UN” reduced the number but still completed more than 9 credits (GPA affected)



# What those grades mean?

## Grades

- Become familiar with [Grading Policy](#) at Douglas College!
- Visit Grading FAQ page for more details:  
<https://www.douglascollege.ca/current-students/important-dates-information/grading-faq>

## Douglas College Website:

- Working as an International Student: <https://www.douglascollege.ca/international-students/current-international-students/working-international-student>
- Enrollment status and Scheduled breaks for international students: <https://www.douglascollege.ca/international-students/current-international-students/enrollment-status>

## Immigration, Refugees and Citizenship Canada website:

- Study Permit conditions: <https://www.canada.ca/en/immigration-refugees-citizenship/services/study-canada/study-permit/prepare-arrival/study-permit-conditions.html>
- Working off campus as an international students: <https://www.canada.ca/en/immigration-refugees-citizenship/services/study-canada/work/work-off-campus.html>
- Post-graduation Work Permit eligibility criteria: <https://www.canada.ca/en/immigration-refugees-citizenship/services/study-canada/work/after-graduation/eligibility.html#instructions>

Sept. 24<sup>th</sup> 3:30 – 4:30pm

## **Eligibility for Working in Canada**

- Eligibility and requirements for working on/off campus
- Scheduled vs academic semesters at Douglas College
- Co-op and Career Centre services

Nov. 26<sup>th</sup> 3:30 – 4:30pm

## **PGWP Basics workshop**

- Things to know before you graduate
- Documents checklist
- Implied status & working eligibility

Sing up via our [workshop page](#)

- Learn FT definition and working eligibility before you start working
- Learn your curriculum and finish your program on time
- **By falling out of course sequence, you might end up being a part-time student and make yourself ineligible for a post-graduation work permit**
- If you fail a course, you need to learn what you need to do to get back on the track
- If you are hoping for a post-graduation work permit, make sure you know the eligibility requirements

# How to contact us:

## We are here to help!

- [Contact Us via Webform](#)
- drop-in via Zoom (Meeting ID: [632 0617 8945](#) )
  - 15-20 minutes per student
  - sign-in 10 minutes before each drop-in session

Monday	Tuesday	Wednesday	Thursday	Friday
1 PM - 4 PM	1 PM - 4 PM	1 PM - 4 PM	1 PM - 4 PM	N/A

- Online/in-person appointments are available. Please visit our website for more information: <https://www.douglascollege.ca/international-students/current-international-students/advising-services>

*Advising services are subject to change. Please always check the following webpage for updates.*

<https://www.douglascollege.ca/international-students/current-international-students/advising-services>



DOUGLAS COLLEGE

Thank you

[douglascollege.ca](http://douglascollege.ca)



