



DOUGLASCOLLEGE

Enrollment Status

Strong Start

Winter 2021

January 18, 2021



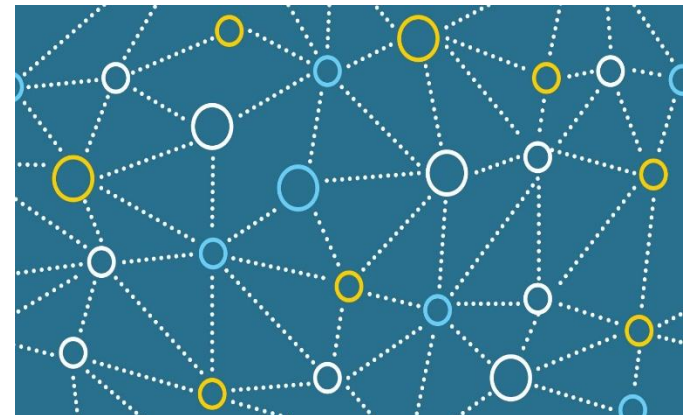
International Student Advising Specialist (ISASs)

- We can advise on concerns/questions around Study Permit (i.e work eligibility, study permit extension, spousal work permit, Post-graduation work permit...)
- We are not able to advise on your PR options

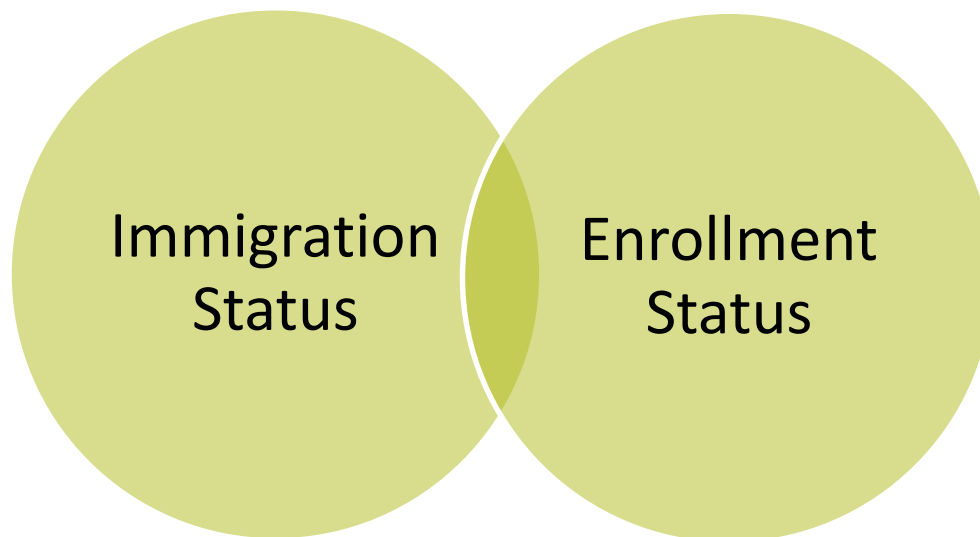
The information in this workshop may change in the future!

- This workshop is for current Douglas students.
- This is not a legal document. **Information is subject to change at any time.**
- ***Always*** refer to Immigration, Refugees and Citizenship Canada for the most up-to-date information.

- Enrollment status & Immigration status
- Direct or indirect impact of factors
 - Academic semester
 - Full/ Part-time status
 - Working
 - Breaks and leaves
 - Program of study
 - Grades
- How to connect the dots
- References and links



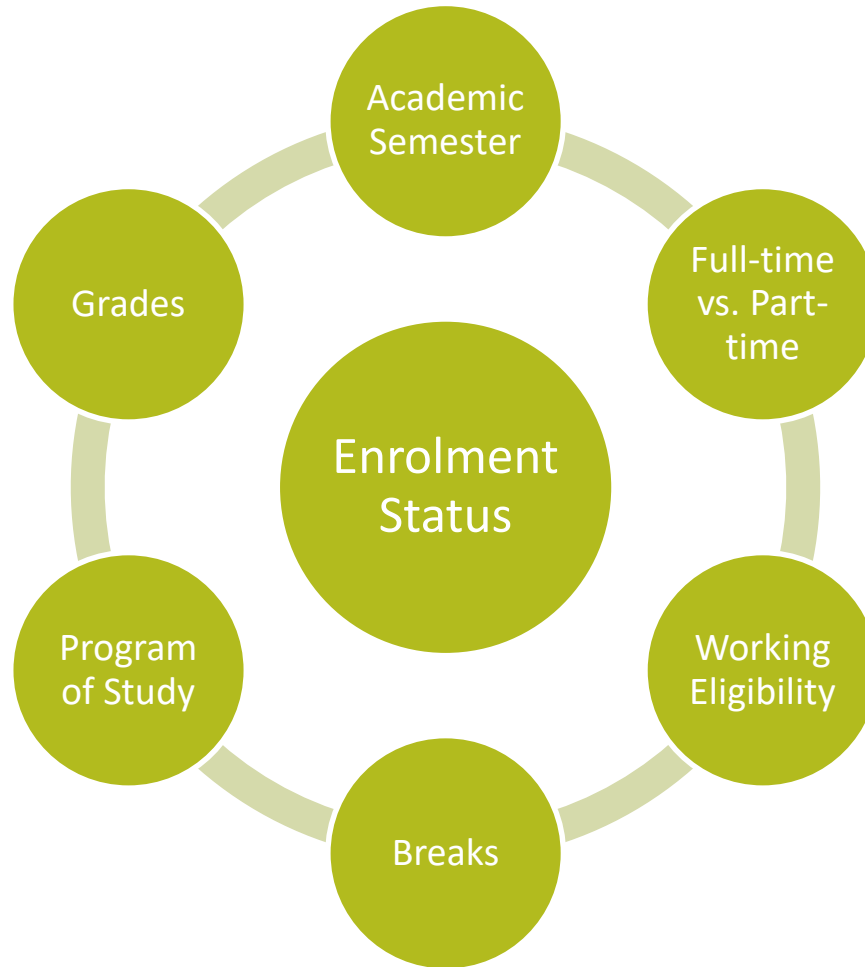
Immigration Status & Enrollment Status



General

- F/T, P/T determined by Designated Learning Institutions (DLI)
- Active pursue of studies
- Successful completion during assigned program duration
- Not required to enroll full-time to prove active pursuit of studies
- Must be enrolled full-time to work on/off campus

Factors to consider:



Full-time course load

- International students must have full-time enrollment which means registering **and** completing a minimum of (9) credits per academic semester
- If you started the semester with (9) or more credits but end up reducing your course load to less than (9) credits due to course dropping or withdrawal or receiving certain grades but in the end your courses were not completed– you will not have a full-time status. (even if you registered for full course load or attended all classes during your semester)

Part-time course load

- If for any reason you end up being enrolled in less than (9) credits you will be considered as a part-time student.
- Students must have full-time status in order to work on or off campus.
- Your academic activities and standing will be reflected on your records and transcripts and cannot be undone!

Working Eligibility

- Your enrollment status determines your working eligibility
 - Work On/Off-Campus
 - Work after graduation
 - Leave from studies
 - Scheduled Breaks

Work On/Off-Campus

- International students who are not full-time are not permitted to work [on-campus](#) or [off-campus](#).

- Exception:

If you are a part-time student, you may work off campus **only if**:

- You are only studying part-time, instead of full-time, because:
- You are in the last semester of your study program and you do not need a full course load to complete your program **and**
- you were a full-time student in your program in Canada, up until your last semester
- you meet **all** other requirements

Work after graduation

- In order to be eligible, you must maintain a full-time course load in every semester and meet all other [post-graduation work permit](#) eligibility requirements.

Leave from studies

Authorized /Unauthorized leave

- At Douglas College, we do not have an authorized leave system. This means if you take a break from your studies during your academic semester, you will be on an unauthorized leave.
- During leaves from studies, you cannot work on campus or off campus, as you are considered neither to be a full-time student, nor on a regularly scheduled break. Therefore, you do not meet the requirements of [paragraph R186\(f\) or \(v\)](#).
- <https://www.canada.ca/en/immigration-refugees-citizenship/corporate/publications-manuals/operational-bulletins-manuals/temporary-residents/study-permits/assessing-conditions.html#campus>

Scheduled Breaks

- Regularly scheduled break, must be part of the educational institution's academic calendar (for instance, **winter and summer holidays, Reading Week**).
- At Douglas College, “scheduled breaks” are defined as **Summer semesters**, unless Summer is your first or last semester
- The **time between semesters** from the day **AFTER** the exam period until the first day of class of the next semester.

Scheduled Breaks

- IRCC has defined what scheduled break is, **however,**
- Your program must also be eligible for a summer break!
- Some programs at Douglas College are not eligible for summer break.
- So, you may or may not study part time in the Summer semester.

(If you are unsure, check your program requirements and the chart provided on the website at this link: <https://www.douglascollege.ca/international-students/current-international-students/working-international-student>)

Scheduled Breaks

- You cannot take a scheduled break in your first or last semester!

- To work full-time during scheduled break, you must be a full-time student both before and after the break.

Scheduled Breaks

- At Douglas College, Post-degree Diplomas (PDD) and Certificate programs do not have a scheduled break during Summer!
- All PDD and Certificate programs do not have a scheduled break during Summer unless it is between 2 x PDD programs back-to-back.

Scheduled Breaks

- Any leave taken from program of studies should not exceed 150 days from the date the leave commenced and must be authorized by DLI. The maximum cumulative duration of scheduled breaks is 180 days per calendar year.
- If the student does not resume studies within 150 days they should either change their status to visitor or leave Canada.

<https://www.canada.ca/en/immigration-refugees-citizenship/corporate/publications-manuals/operational-bulletins-manuals/temporary-residents/study-permits/campus-work.html>

Program of Study

- At Douglas College, students in some programs must be enrolled continuously in a row for a few semesters with no scheduled breaks!
- For example, at Douglas College, Post-degree Diplomas (PDDs) and Certificate programs do not have a scheduled break during Summer!

Grades

- Your grades may affect your enrollment status.
- If a student withdraws or receives a **W, UN, UNW, FD,** or **AUD** the course will NOT count towards the full-time course load and may reduce the number of your credits to less than 9 credits.

Grades

UN	Did not write final exam or complete course requirements
UNW	<p style="text-align: center;">Unofficial Withdrawal</p> Student completed less than 70% of the total evaluation of the course, or missed more than 30% of the classes where the Instructor's Course Outline specifies that attendance is a course requirement.

AUD	Not calculated in GPA	<p style="text-align: center;">Audit</p> Student attended and met requirements as per Audit Contract. The grade has no numerical equivalent and is not included in the GPA .
------------	-----------------------	--

Grades

FD	0.00	Failure due to academic dishonesty Student has breached the standards of academic integrity as laid out in the Academic Integrity Policy. This notation will remain on the student's transcript for two years following the student's graduation or last semester attended, at which time the student will become eligible to apply to have the grade converted to an "F". See Academic Integrity Policy
W	Not calculated in GPA	Withdrawal before the official deadline

Grades

- Become familiar with [Grading Policy](#) at Douglas College!

- Visit Grading FAQ page for more details:
<https://www.douglascollege.ca/current-students/important-dates-information/grading-faq>

- Douglas College Website
- Immigration Refugees Citizenship Canada
- ✓ <https://www.douglascollege.ca/international-students/current-international-students/working-international-student>
- ✓ <https://www.douglascollege.ca/international-students/current-international-students/enrollment-status>
- ✓ <https://www.canada.ca/en/immigration-refugees-citizenship/corporate/publications-manuals/operational-bulletins-manuals/temporary-residents/study-permits/other-considerations.html>
- ✓ <https://www.canada.ca/en/immigration-refugees-citizenship/services/study-canada/work/after-graduation/eligibility.html#instructions>
- ✓ <https://www.douglascollege.ca/current-students/important-dates-information/grading-faq>

How to contact us:

We are here to help!

General inquiries:
dci@douglascollege.ca

Case specific inquiries:
dci.immigration@douglascollege.ca

**We require your full name AND student ID
in ALL your communications with us!**

Online Advising Drop-in sessions via Zoom
Visit [Advising Services](#) page for schedules & links

Questions





DOUGLAS COLLEGE

Thank you

douglascollege.ca

