

PEAK/Buildings



**Practical Energy and Advanced
Knowledge for Buildings
Certificate Program**

A construction worker wearing a hard hat and safety vest, holding a rolled-up blueprint, stands on a wooden platform within the skeletal frame of a building under construction. The background shows the intricate wooden truss system of the roof and walls.

BRITISH COLUMBIA 2022 LABOUR MARKET OUTLOOK



WorkBC

#FINDYOURFIT

[British Columbia 2022 Labour Market Outlook](#)

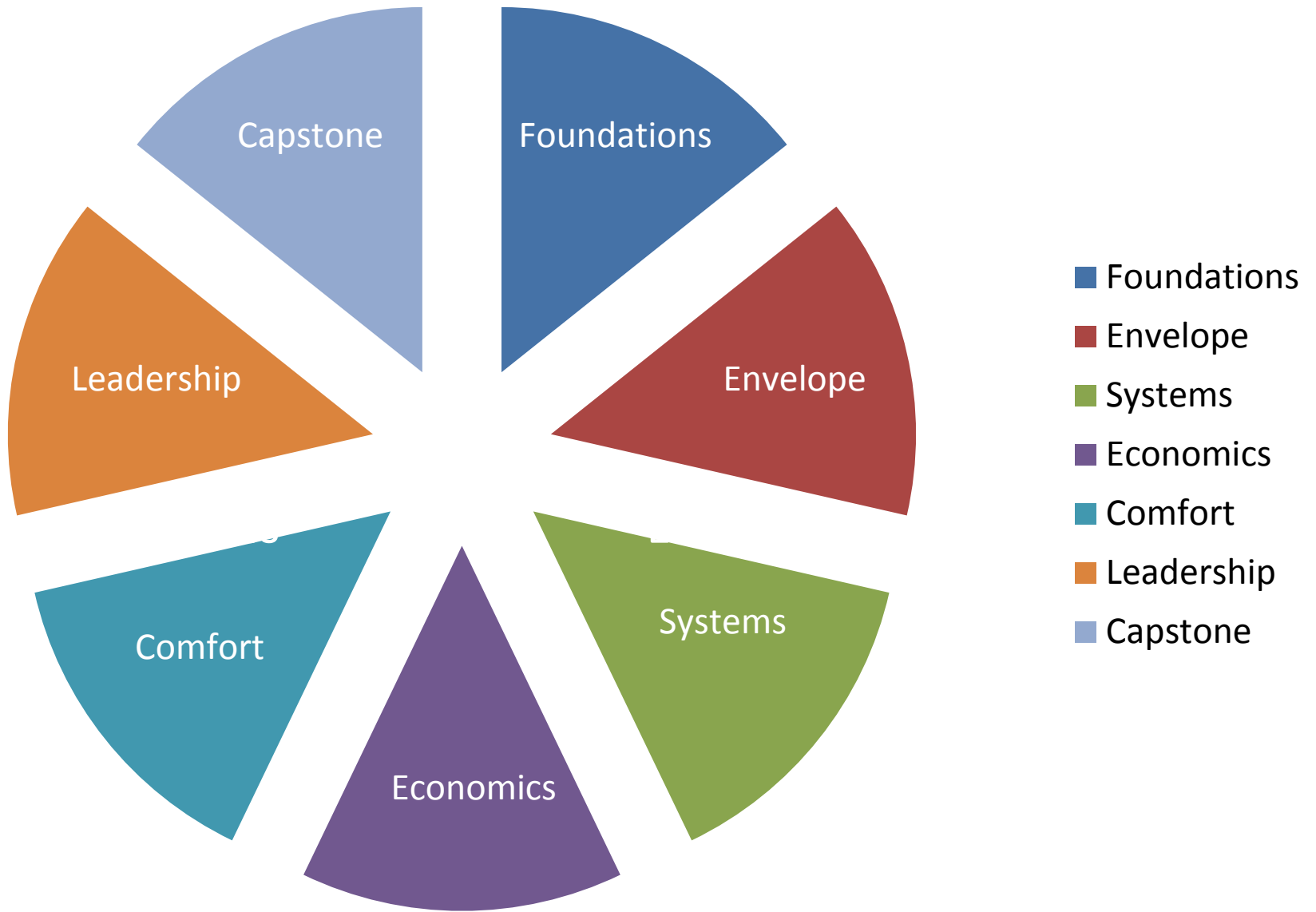
Occupational fits with PEAK/Buildings

- Construction managers, contractors and supervisors
- Property managers
- Facility managers and operation and maintenance staff
- Energy managers and energy specialists
- Home building and renovation managers
- Residential and commercial installers and servicers

Occupational fits with PEAK/Buildings

- In organizations where Corporate Sustainability Reporting or stated energy, environmental, sustainability goals are in place
 - Retail
 - Administrative assistants and office support workers
 - Administrative officers
 - Financial auditors, accountants and bookkeepers
 - Purchasing agents
- Trades, where LEED, Passive House or other verification systems are in place

PEAK/Buildings Certificate



- One-year program
- Foundations course available continuously (online)
- 5 core courses hybrid format
- Collect artifacts for the Capstone course
- Certificate awarded when all courses are finished
- Fall 2017 launch

Capstone

Envelope

Systems

Economics

Comfort

Leadership

Foundations

Foundations

- Online
- Self-paced
- Interactive
- Pre-requisite to the five core courses



Envelope Performance

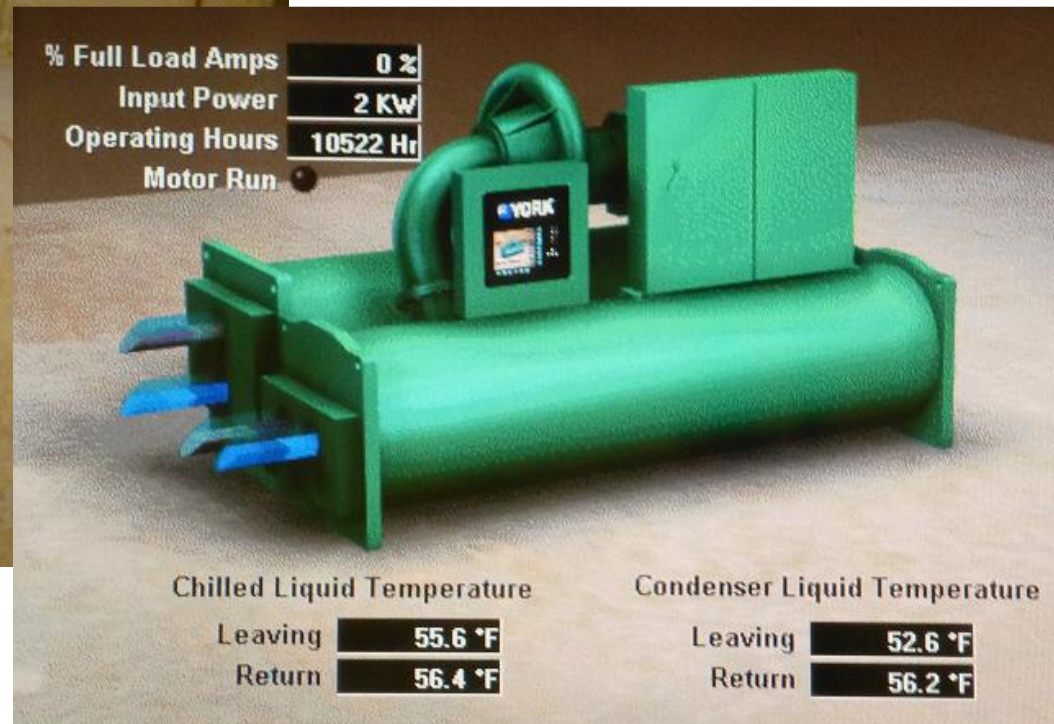


Hybrid
Experiential
Building Science and Passive House focus



Building Systems

Hybrid
Experiential
Integrated systems focus



Resource Economics

Hybrid
Experiential
Energy, water, materials, and
land-use focus



Comfort and Well-being in Buildings

Hybrid
Experiential
Indoor environmental quality
focus



By [Passivhaus Institut](https://www.passivhaus-institut.de/), Germany CC BY-SA 3.0,

Leadership

Hybrid
Experiential
Communication and
transition management



Capstone

Self-paced
Portfolio review
Practical experience and
demonstration of knowledge
focus

BERM cohort,
Vancouver Convention Centre green roof tour



Steven Bishop

Passive House Consultant

LEED AP + EBOM

PEAK/Buildings Certificate Program

Building Energy and Resource Management Certificate
Program

www.douglascollege.ca/berm

twitter.com/bermprogram

www.facebook.com/bermprogram

604-527-5660 (office)

604-367-7243 (cell)

